



Contents lists available at ScienceDirect

Biochemical and Biophysical Research Communications

journal homepage: [www.elsevier.com/locate/ybbrc](http://www.elsevier.com/locate/ybbrc)



# ARHGAP30 is a Wrch-1-interacting protein involved in actin dynamics and cell adhesion

Latifa Naji<sup>a</sup>, Dirk Pacholsky<sup>b</sup>, Pontus Aspenström<sup>a,\*</sup>

<sup>a</sup> Department of Microbiology, Tumor and Cell Biology, Karolinska Institutet, Nobels Väg 16, Box 280, SE-171 77 Stockholm, Sweden

<sup>b</sup> Department of Immunology, Genetics and Pathology, Rudbeck Laboratory, Uppsala University, SE-751 85 Uppsala, Sweden

## ARTICLE INFO

### Article history:

Received 20 April 2011

Available online 1 May 2011

### Keywords:

RhoGAP

Wrch-1

Rho

Actin dynamics

## ABSTRACT

The atypical Rho GTPase Wrch-1 has been proposed roles in cell migration, focal adhesion dissolution, stress fibre break down and tight junction heterogeneity. A screen for Wrch-1 binding-partners identified the novel RhoGAP protein, ARHGAP30, as a Wrch-1 interactor. ARHGAP30 is related to the Cdc42- and Rac1-specific RhoGAP CdGAP, which was likewise found to bind Wrch-1. In contrast to CdGAP, ARHGAP30 serves as a Rac1- and RhoA-specific RhoGAP. Ectopic expression of ARHGAP30 results in membrane blebbing and dissolution of stress-fibres and focal adhesions. Our data suggest roles for ARHGAP30 and CdGAP in regulation of cell adhesion downstream of Wrch-1.

© 2011 Elsevier Inc. All rights reserved.

## 1. Introduction

Rho GTPases are pivotal regulatory units in signal transduction pathways that regulate cell morphogenesis, cell adhesion, cell proliferation and cell migration [1]. The atypical Rho GTPase Wrch-1 (also known as RhoU) was originally identified in a screen for genes upregulated in response to Wnt-1 in mouse mammary cells, hence the name Wnt responsive Cdc42 homologue (Wrch-1) [2]. It was proposed that Wrch-1 link Wnt-1 to downstream responses, such as cell transformation and gene transcription [2]. Wrch-1 is functionally and structurally distinct from other members of the Rho GTPases since it contains a proline-rich N-terminal extension, which has been found to bind SH3 domain containing proteins such as Nck and Grb2 [3,4]. Although it harbours a measurable GTP-hydrolysis activity, the high intrinsic nucleotide exchange activity overrules this enzymatic process and result in a constitutively active, GTP-bound, status of Wrch-1 [3–5]. This property implicates that the activity of the protein must be regulated by other factors than the canonical Rho GEFs and RhoGAPs; however how this regulation is achieved is currently not known. Moreover, Wrch-1 and the closely related Chp (RhoV) do not harbour any functional CAAX boxes. Instead, membrane targeting of the proteins is conferred by palmitoylation [6,7].

Ectopic expression of Wrch-1 in fibroblasts result in formation of filopodia associated with loss of focal adhesion and stress fibres [2–4,8]. The latter phenotype can be seen as a rounding up of the

cells, a phenomenon which, in this case, is not associated with increased apoptosis [3]. The formation of Wrch-1 filopodia occurs in a Cdc42- and Rif-independent manner and requires the direct interaction to the non-receptor tyrosine kinase Pyk but, importantly, the Wrch-1:Pyk2 interaction is regulated by Src [10]. Wrch-1 is also involved in the regulation of cell:cell contacts in a PAR6-dependent manner [9]. Moreover, the protein is working as transforming agent in common *in vitro* assays for cell transformation, such as growth in soft agar [4,7]. We sought to study the biological functions of Wrch-1 by identifying novel binding partners for the protein. Employing a yeast two hybrid cDNA library from EBV-transformed human B-cells, we identified ARHGAP30, a previously uncharacterized RhoGAP domain-containing protein, as a candidate Wrch-1-binding protein. ARHGAP30 is closely related to the Cdc42-specific RhoGAP CdGAP [11], and together they form a subgroup of the RhoGAP proteins. The two proteins differ in tissue expression and they also differ in their affinity for the different members of the Rho GTPases. We show that Wrch-1 binds ARHGAP30 and CdGAP in co-immunoprecipitation assays. Furthermore, we show that the proteins have roles downstream of Wrch-1 in cytoskeletal regulation and dissolution of focal adhesions.

## 2. Materials and methods

### 2.1. Isolation and cloning of ARHGAP30

The yeast two-hybrid screen employed to identify ARHGAP30 as a binding partner for the constitutively active mutant of Wrch-1 (Wrch-1/Q107L) has been described before [10]. EST clones

\* Corresponding author. Fax: +46 8 330498.

E-mail address: [pontus.aspenstrom@ki.se](mailto:pontus.aspenstrom@ki.se) (P. Aspenström).

encoding the human ARHGAP30 were obtained from Geneservice Ltd., Cambridge, UK. Two clones were used for further characterisation: BI906570, which encoded the full-length S-ARHGAP30 and BM464735, which encoded the C-terminal portion of L-ARHGAP30, including the glutamic acid-rich segment. In order to obtain a full-length L-ARHGAP30, the N-terminal fragment of S-ARHGAP30 was ligated to the C-terminal fragment of L-ARHGAP30. The cDNAs were subsequently subcloned into the mammalian expression vectors pRK5Myc and pRK5FLAG. pRK5Myc–CdGAP was a generous gift from N. Lamarche-Vane, Montreal, Canada. The vectors expressing the constitutively active Rho GTPases have been described before [10]. Nucleotide sequencing was done on an ABI Prism 310 Genetic Analyzer.

## 2.2. Reagents and antibodies

Mouse monoclonal anti-Myc (9E10) antibodies were from Covance; rabbit polyclonal anti-Myc and mouse monoclonal anti-phospho-tyrosine (PY99) antibodies were from Santa Cruz Biotechnology; mouse monoclonal anti-FLAG (M2) and mouse monoclonal anti- $\alpha$ -tubulin antibodies were from Sigma–Aldrich; tetramethyl rhodamine isothiocyanate (TRITC)- and aminomethylcoumarin acetate (AMCA)-conjugated antibodies were from Jackson ImmunoResearch; AlexaFluor488-conjugated antibodies and AlexaFluor488- and AlexaFluor350-coupled phalloidin were from Invitrogen (Molecular Probes); TRITC-labelled phalloidin was from Sigma–Aldrich. Rabbit polyclonal anti-CdGAP was a generous gift from N. Lamarche-Vane, Montreal, Canada.

## 2.3. Cell cultivation, transfection and immunoprecipitation procedures

Maintenance of HEK293T cells, normal mouse embryonic fibroblasts (MEFs) and porcine aortic endothelial cells stably expressing the human platelet-derived growth factor receptor  $\beta$  (PAE/PDGFR $\beta$  cells) was carried out as described before [10]. The transfection and staining procedures have been described before [10]. Microscopy analysis was performed on a Zeiss Axiovert 40 CFL equipped with an AxioCam MRm digital camera employing the AxioVision software.

## 2.4. Purification of recombinant proteins and GAP assay

A fragment encoding the GAP domain (amino-acid residues 1–215) of ARHGAP30 was subcloned in the pGEX2T vector. Recombinant GST-fusion proteins were produced in *Escherichia coli* and purified as described before [12]. The GAP assay followed the procedure by Self and Hall [13]; briefly, recombinant Rho GTPases were preloaded with [ $\gamma$ <sup>32</sup>P]-GTP in the presence of equimolar amounts of GST-ARHGAP30-GAPdomain. Hydrolysis activity was determined by taking aliquots from the incubation mixtures intervals as described in Fig. 3. Samples were collected on nitrocellulose filters and washed and the filters were subjected to scintillation counting.

## 3. Results and discussion

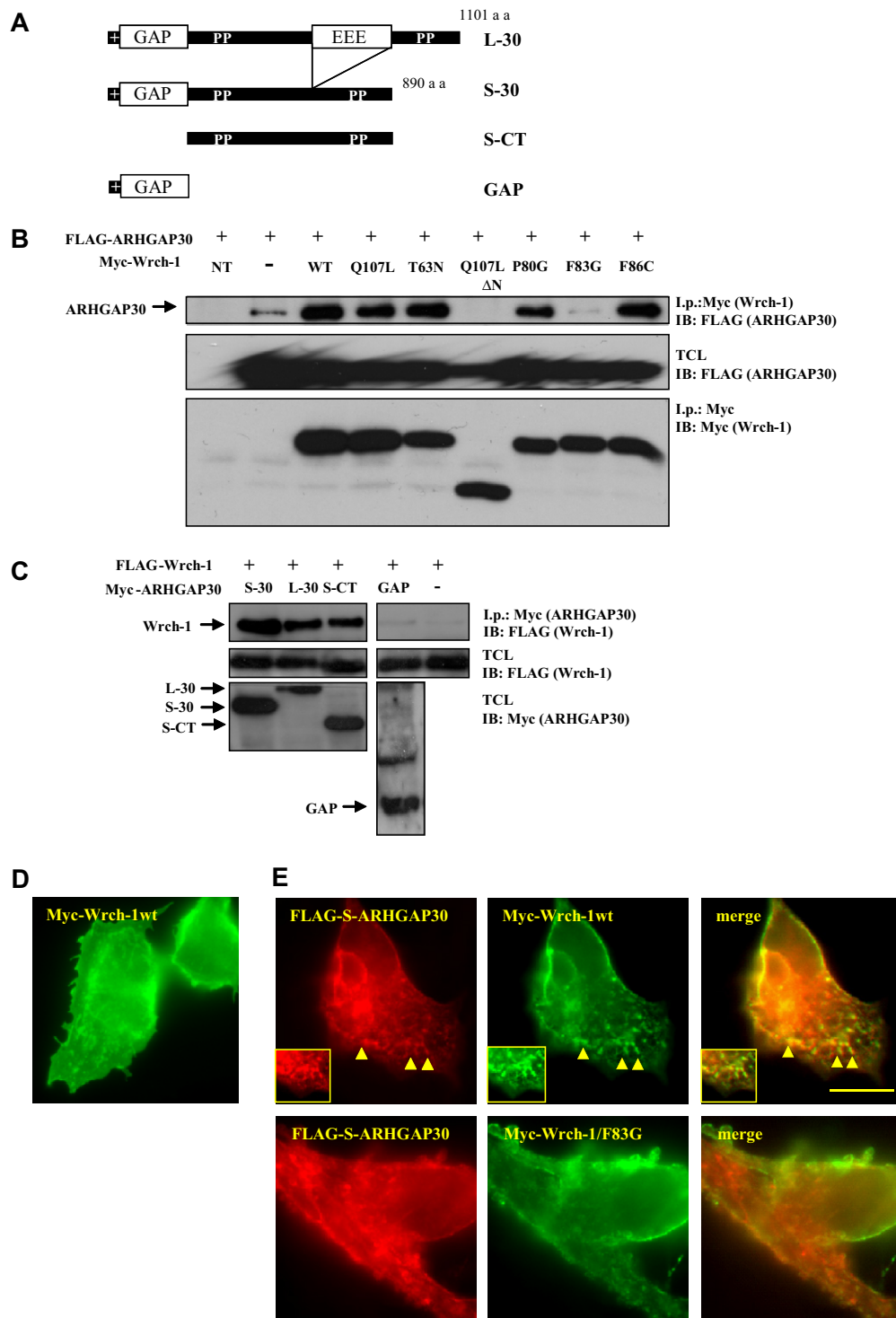
We performed a yeast two hybrid screen to identify binding partners for the constitutively active mutant of Wrch1 (Wrch1/Q107L). Yeast, *Saccharomyces cerevisiae*, cells expressing Wrch1/Q107L fused to the GAL4 DNA binding-domain was transformed with a cDNA library derived from EBV transformed human B-cells fused to the GAL4 activation domain [10]. Clones expressing candidate Wrch1/Q107L-interacting proteins were recovered and subjected to sequence analysis. One set of the clones encoded a non-characterised RhoGAP domain-containing protein, named ARH-

GAP30. The gene appears to encode two major splice-variants which we called L-ARHGAP30 and S-ARHGAP30 for the long and short splice form, respectively (Fig. 1A). The only difference between the two is the absence of a glutamic acid-rich stretch of amino acid residues in S-ARHGAP30. ARHGAP30 is a paralogue to the ubiquitously expressed RhoGAP domain-containing protein CdGAP [11]. *In silico* analysis of the UniGene data-bank indicate that ARHGAP30 has a relative restricted expression pattern. It is expressed in different cells of haematopoietic origin but also in endocrine cells, connective tissue, muscle, and lung cells.

We first confirmed the yeast two hybrid results by coimmunoprecipitation analysis. To this end, FLAG-tagged S-ARHGAP30 was cotransfected with mutants of Wrch-1 in HEK293T cells. The cells were lysed and the presence of S-ARHGAP30 in the Wrch-1 precipitates was determined by immunoblotting. S-ARHGAP30 bound the wild-type and constitutively GTP-bound mutant Wrch-1 (Wrch-1/Q107L) with equal affinity. The Wrch-1/T63N mutant, corresponding to the GDP-bound, inactive conformation of Wrch-1, also bound S-ARHGAP30, indicating that the interaction is not strictly GTP-dependent (Fig. 1B). In contrast, a mutant Wrch-1 lacking the N-terminal extension was unable to bind S-ARHGAP30 indicating the binding requires an intact GTP-bound Wrch-1 protein. We also tested the binding-ability between ARHGAP30 and a panel of Wrch-1 constructs harbouring point mutations in its effector loop. We previously noticed significant differences in the binding specificity between these Wrch-1 mutants and a collection of Wrch-1-binding proteins. PAK1 binds only to Wrch-1/F83G and not to Wrch-1/P80G and Wrch-1/F86C [10]. Nck binds to all three Wrch-1 mutants and PYK2 does not bind to any of them [10]. Interestingly, ARHGAP had an opposite binding pattern compared to PAK1 since it bound to P80G and the F86C mutant of Wrch-1, but not to F83G mutant (Fig. 1B). These observations suggest that these binding partners serve different roles downstream of Wrch-1.

In order to identify the Wrch-1-binding domain on ARHGAP30, deletion mutants of ARHGAP30 were cotransfected with Wrch-1. We found that Wrch-1 bound to the C-terminal part of ARHGAP30 but not to the GAP domain, indicating that ARHGAP30 is unlikely to be a GAP for Wrch-1 (Fig. 1C). Wrch-1 has been shown to localise to vesicular structures in mouse fibroblasts, which was also found in PAE/PDGFR $\beta$  cells (Fig. 1D) [3]. We transfected FLAG-tagged S-ARHGAP30 together with Myc-tagged Wrch-1 into PAE/PDGFR $\beta$  cells and observed that ARHGAP30 localised in a vesicular pattern in the cytoplasm and the vesicles often coincided with Wrch-1 (Fig. 1E). In contrast, the Wrch-1/F83G-positive vesicles rarely coincided with ARHGAP30 (Fig. 1E).

We have previously found that ectopic expression of Wrch-1 in fibroblasts is associated with filopodia formation, stress fibre breakdown and loss of cell adhesion [3,5,10]. We reasoned that, provided ARHGAP30 serves as a downstream effector of Wrch-1, it should be able to induce a Wrch-1-like cellular response [3,10]. To test this hypothesis, ARHGAP30 was ectopically expressed in PAE/PDGFR $\beta$  cells. The subcellular localisation of ARHGAP30 was determined with an antibody against the Myc epitope and the effect on the actin organisation was assayed by staining the cells for filamentous actin with fluorescently labelled phalloidin. S-ARHGAP30 expression resulted in stress fibre dissolution and a loss of cell attachment. These effects were also associated by a vigorous membrane blebbing (Fig. 2A, quantified in Fig. 2B). L-ARHGAP induced a similar phenotype in PAE/PDGFR $\beta$  cells (Fig. 2B). The deletion mutants of ARHGAP30 lacking the GAP domain or the C-terminal domains did not induce any significant membrane blebbing or up-rounded phenotype indicating that the full-length protein is required for this phenotype (Fig. 2B). We also analysed the effect of ectopic expression of ARHGAP30 on focal adhesion dissolution and noticed a more or less complete penetrance of this



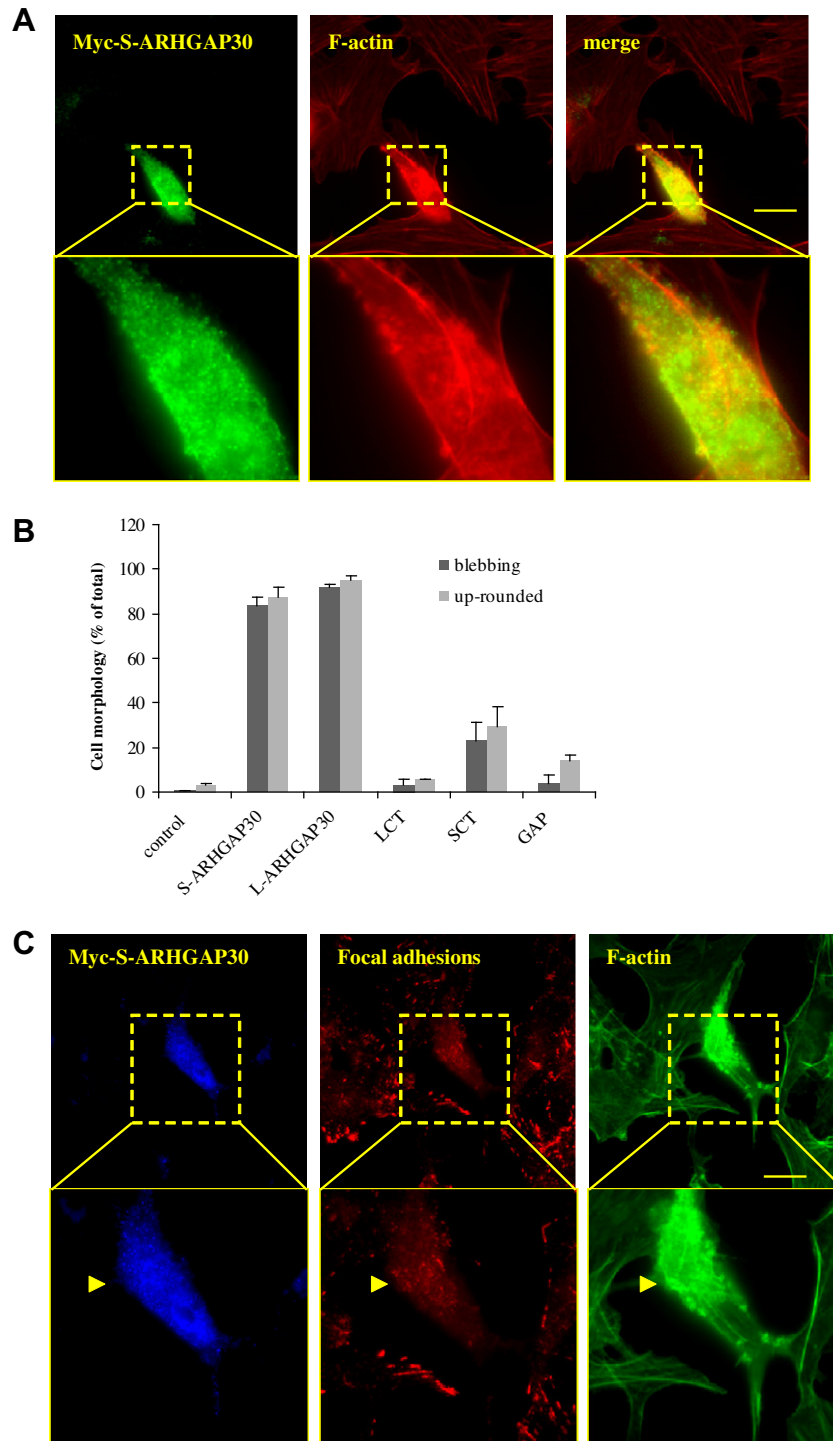
**Fig. 1.** ARHGAP30 is a Wrch-1-binding protein. (A) Schematic representation of L- and S-ARHGAP30: positive residues at the N-terminus (+), GAP domain (GAP), glutamic acid-rich motif (EEE) and proline-rich motifs (PP). (B) HEK293T cells were transiently transfected with FLAG-tagged S-ARHGAP30 and Myc-tagged Wrch-1 mutants. Immunoprecipitation of Wrch-1 was performed using anti-Myc antibodies. The immunoblots were probed with FLAG antibodies to detect FLAG-S-ARHGAP30 in the immunoprecipitates. (C) HEK293T cells were transiently transfected with FLAG-tagged Wrch-1 and Myc-tagged ARHGAP30 deletion mutants. Immunoprecipitation was performed using anti-Myc antibodies. The immunoblots were probed with FLAG antibodies to detect the presence of FLAG-Wrch-1 in the immunoprecipitates. (D) The localisation of Myc-Wrch-1 was analysed in transiently transfected PAE/PDGFR $\beta$  cells. Myc-Wrch-1 was visualised by rabbit anti-Myc antibodies followed by AlexaFluor488-conjugated anti-rabbit antibodies. (E) The colocalisation between Myc-Wrch-1 and FLAG-S-ARHGAP30 was analysed in transiently transfected PAE/PDGFR $\beta$  cells. The subcellular localisation of Wrch-1 was determined by rabbit anti-Myc antibody followed by AlexaFluor488-conjugated anti-rabbit antibodies. FLAG-S-ARHGAP30 was visualised by mouse anti-FLAG antibodies followed by TRITC-labelled anti-mouse antibodies. The bar denotes 20  $\mu$ m.

phenotype in cells expressing S-ARHGAP30 (Fig. 2C). Membrane blebbing is caused by actomyosin contractions and involves the activity of Rho GTPases, in particular RhoA, suggesting that ARHGAP30 affects these processes [14].

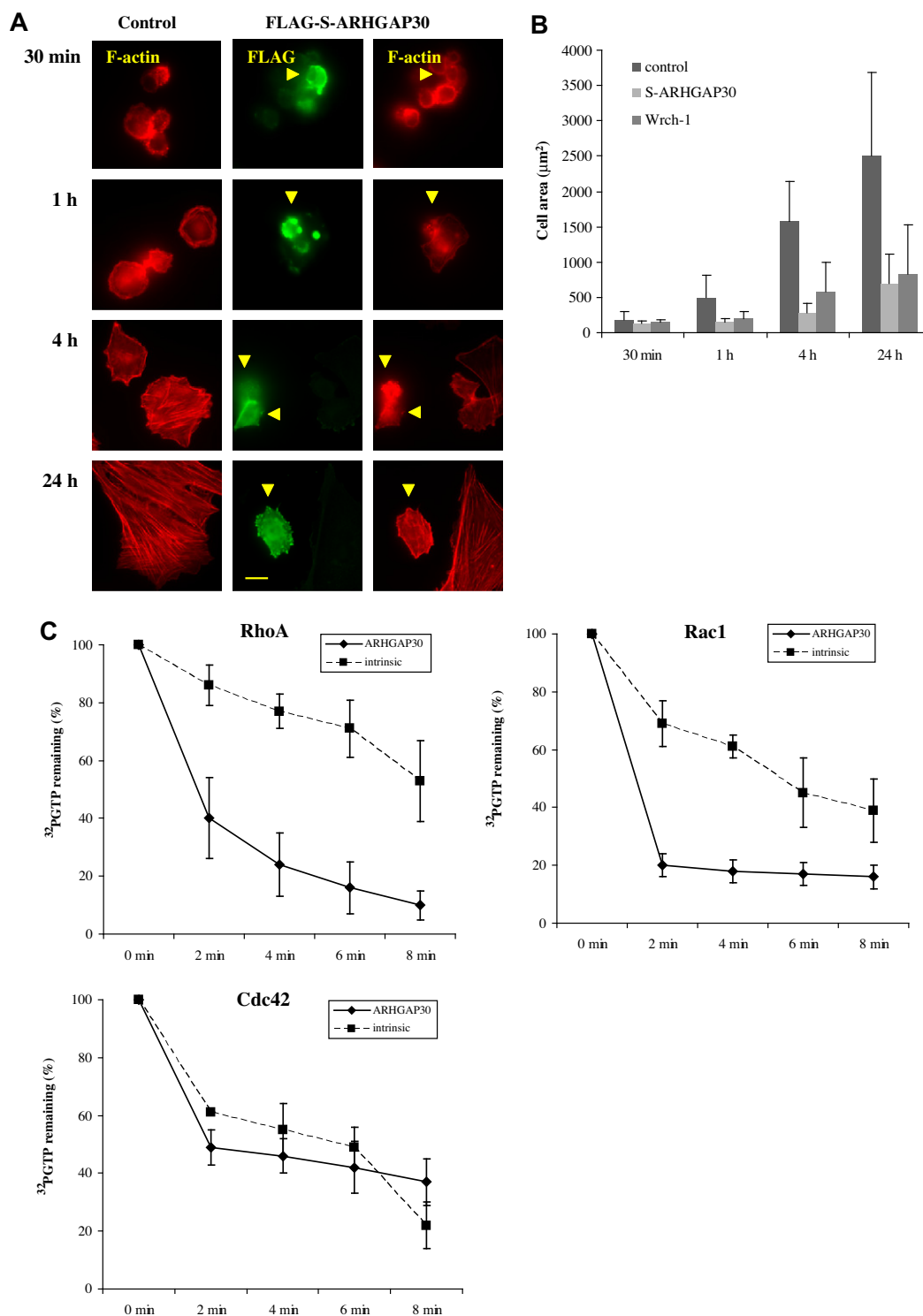
We next transfected PAE/PDGFR $\beta$  cells, in order to study the ARHGAP30-dependent effects on cell adhesion. To this end, transfected cells were trypsinised and re-seeded on coverslips 18 h post transfection and the cells were allowed to spread for time intervals

between 30 min and 24 h before fixation. The non-transfected cells spread normally, determined as the size of the spreading cells (Fig. 3A, quantified in Fig. 3B). In contrast, the ARHGAP30-expressing cells retained an up-rounded morphology even after 24 h of spreading (Fig. 3A and B). We thereafter wanted to analyse the

specificity of the GAP domain of ARHGAP30. For that reason, recombinant  $\gamma^{32}\text{P}$ -GTP-loaded Cdc42, Rac1 or RhoA were incubated in the presence of the ARHGAP30 RhoGAP domain (amino-acid residues 1–215) and the loss of  $\gamma^{32}\text{P}$  from the GTPase was determined with a filter binding-assay followed by scintillation



**Fig. 2.** ARHGAP30-dependent effects on cell morphogenesis and cell adhesion. (A) PAE/PDGFR $\beta$  cells were transiently transfected with plasmids encoding Myc-tagged S-ARHGAP30 and its subcellular localisation was determined by mouse anti-Myc antibodies followed by anti-mouse AlexaFluor488-conjugated antibodies. Filamentous actin was detected by TRITC-labelled phalloidin. The bar denotes 20  $\mu\text{m}$ . (B) Quantification of cellular effects was done by microscopy analysis and scored as membrane blebbing or rounding up of the cells as a measure of loss of attachment. At least 300 cells from three experiments were screened for each condition. (C) The effect of ARHGAP30 expression on focal adhesion dissolution was determined in transiently transfected PAE/PDGFR $\beta$  cells. Myc-tagged S-ARHGAP30 was determined by rabbit anti-Myc antibody followed by AMCA-conjugated anti-rabbit antibodies. Focal adhesions were visualised by mouse anti-phospho-tyrosine antibodies followed by TRITC-labelled anti-mouse antibodies. Actin was visualised by AlexaFluor488-conjugated phalloidin. The bar denotes 20  $\mu\text{m}$ .

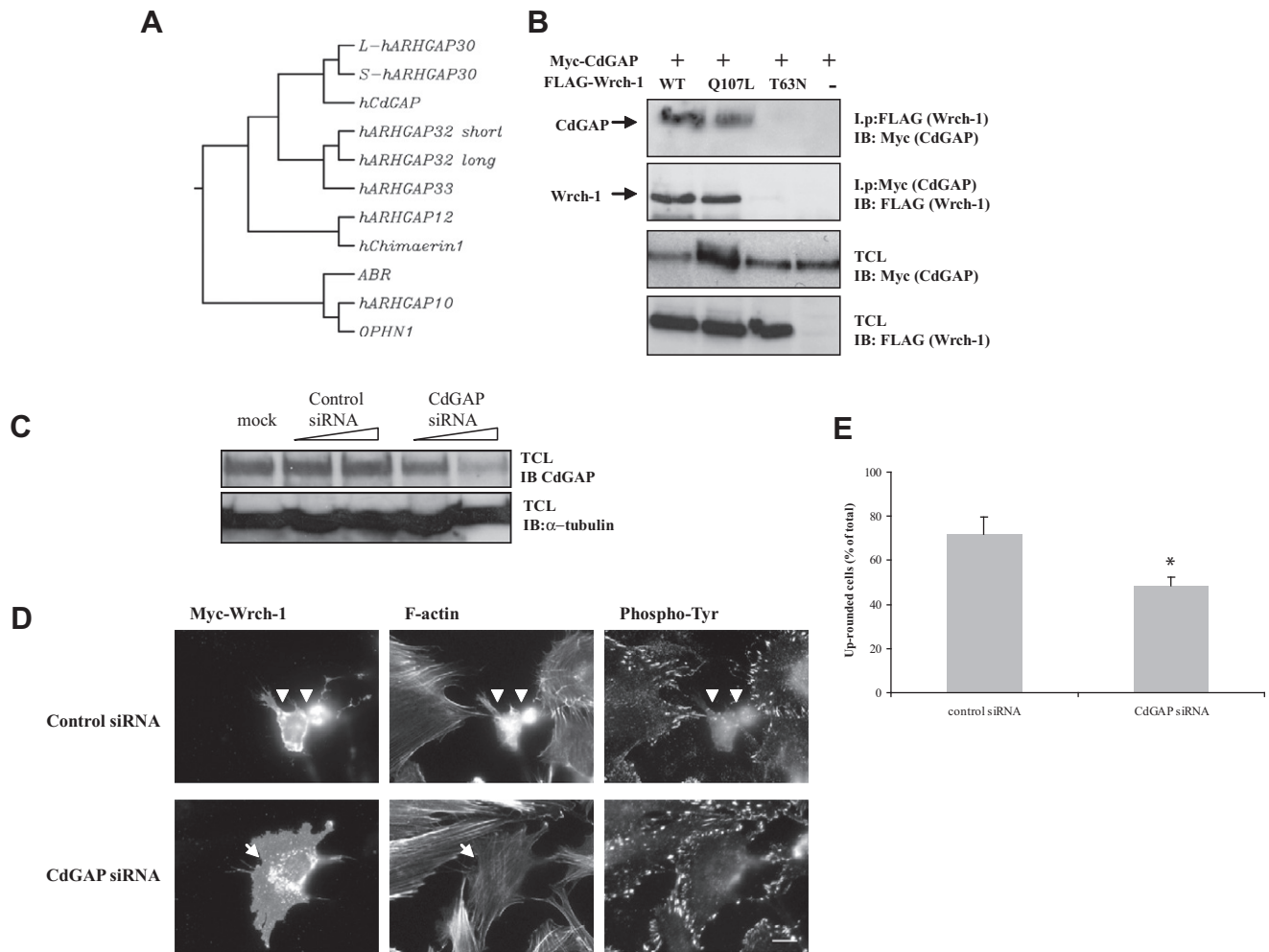


**Fig. 3.** ARHGAP30 is involved in the regulation of cell spreading. (A) PAE/PDGFR $\beta$  cells were transiently transfected with plasmids encoding FLAG-tagged S-ARHGAP30 and the cells were trypsinised 18 h post-transfection and re-seeded on coverslips coated with FBS and allowed to adhere and spread. The cells were fixed after 30 min, 1, 4 and 24 h after which time the cells were fixed. FLAG-tagged S-ARHGAP30 was visualised with mouse anti-FLAG antibodies followed by AlexaFluor488-conjugated anti-mouse antibodies. Filamentous actin was detected by TRITC-labelled phalloidin. Arrowheads show transfected cells. The bar denotes 20  $\mu$ m. (B) Quantification of the area of the spread cells. The area of cells ( $n = 25$ –40 for each condition) were measured by the Zeiss AxioVision software. (C) Specificity of the ARHGAP30 GAP domain was determined by an *in vitro* GTPase assay. RhoA, Rac1 or Cdc42 were loaded with  $\gamma$ -<sup>32</sup>P-GTP and incubated in the presence of a GST-fused RhoGAP domain of ARHGAP30 (amino acid residues 1–215). (—◆—) Denotes the GAP-stimulated GTPases activity and (—■—) denotes the intrinsic activity of the Rho GTPases. A value of 100% corresponds to the initial input of <sup>32</sup>P- $\gamma$ -GTP. Each measurement represents the means of three readings.

counting. The ARHGAP30 GAP domain effectively stimulated GTP-hydrolysis on RhoA and Rac1, but not on Cdc42 (Fig. 3C). This finding shows that ARHGAP30 is a Rac1 and RhoA specific GAP.

Clustal W analysis demonstrated that ARHGAP30 is most closely related to CdGAP (Fig. 4A). ARHGAP30 and CdGAP has different expression pattern. ARHGAP30 is expressed in different cells of





**Fig. 4.** The ARHGAP-related protein CdGAP is a Wrch-1 binding partner. (A) RhoGAP domain-containing proteins related to ARHGAP30 were compared using the Clustal W algorithm. The degree of similarity was visualised by a dendritic tree representation and it shows that ARHGAP30 is closely related to CdGAP. (B) HEK293T cells were transiently transfected with Myc-tagged CdGAP and Wrch-1 mutants as indicated in the panel. Immunoprecipitation was performed using mouse monoclonal anti-FLAG-antibodies or anti-Myc antibodies. The precipitates were analysed by anti-Myc and anti-FLAG antibodies. (C) MEFs were transfected with control siRNA or siRNA for CdGAP. The concentration of the siRNAs was either 25 or 75 nM (the thick part of the wedge). (D) MEFs were transfected with control siRNA or siRNA for CdGAP. The next day Myc-tagged Wrch-1 was transfected and the cells were fixed after another 24 h. Myc-tagged Wrch-1 was visualised by rabbit anti-Myc antibodies followed by anti-rabbit AlexaFluor488-conjugated antibodies, focal adhesions were visualised by mouse anti-phospho-tyrosine antibodies followed by TRITC-labelled anti-mouse antibodies. Filamentous actin was detected by AlexaFluor350-labelled phalloidin. The bar denotes 20  $\mu$ m. (E) Quantification of the up-rounded morphology (caused by decreased cell adhesion) was performed by microscopy analysis. At least 300 cells from three independent experiments were screened for each condition. Statistical analysis was performed using Student's *t*-test showing *p* < 0.05.

haematopoietic (as well as in endocrine cells, connective tissue, muscle, and lung cells), whereas CdGAP appears to be expressed in cells with low level ARHGAP30, including fibroblasts. We wanted to see if also CdGAP could bind Wrch-1 in a co-immunoprecipitation experiment. HEK293T cells were transiently transfected with Myc-tagged CdGAP and FLAG-tagged Wrch-1 mutants (Fig. 4B). CdGAP was found in precipitates of wt Wrch-1 and Wrch-1/Q107L but not from Wrch-1/T63N, suggesting that the interaction required Wrch-1 to be in the GTP-loaded conformation. The reciprocal experiment showed the same result: the GTP-loaded Wrch-1 variants were present in the CdGAP immunoprecipitated material. We next wanted to see if CdGAP was needed for Wrch-1-dependent processes. We first confirmed that normal mouse embryonic fibroblast MEFs express endogenous CdGAP and we could successfully knock down the expression of CdGAP in these cells by siRNA (Fig. 4C). We subsequently transfected the MEFs with the CdGAP-specific siRNA for 24 h and thereafter transfected Myc-tagged Wrch-1 and analysed the cells for cellular effects. We noted that cells treated with the control siRNA had lost

their focal adhesions and rounded up. In contrast, cells transfected with CdGAP-specific siRNA had a better ability to adhere, suggesting that CdGAP is involved in loss of cell adhesion downstream of Wrch-1 (Fig. 4D, quantification in E).

Overlapping functions between ARHGAP30 and CdGAP have been noted before. A recent report demonstrated that ARHGAP30 and CdGAP bind to one of the fourth SH3 domain of the endocytic protein intersectin through a novel type of motif [15]. This intriguing observation might provide a link between Wrch-1 and the endocytic machinery via the ARHGAP30/CdGAP subfamily of RhoGAP proteins.

#### Acknowledgments

This work was supported by grants from the Swedish Cancer Foundation and Swedish Research Council to P.A. P.A. holds a senior researcher position at the Swedish Research Council for Medicine and Health. D.P. was supported by a scholarship from the Wenner-Gren foundation.

## References

- [1] A.B. Jaffe, A. Hall, Rho GTPases: biochemistry and biology, *Annu. Rev. Cell Dev. Biol.* 21 (2005) 247–269.
- [2] W. Tao, D. Pennica, L. Xu, R.F. Kalejta, A.J. Levine, *Wrch-1*, a novel member of the Rho gene family that is regulated by Wnt-1, *Genes Develop.* 15 (2001) 1796–1807.
- [3] J. Saras, P. Wollberg, P. Aspenström, *Wrch1* is a GTPase-deficient Cdc42-like protein with unusual binding characteristics and cellular effects, *Exp. Cell Res.* 299 (2004) 356–369.
- [4] A. Shutes, A.C. Berzat, A.D. Cox, C.J. Der, Atypical mechanisms of regulation of the *Wrch-1* Rho family small GTPase, *Curr. Biol.* 14 (2004) 2052–2056.
- [5] P. Aspenström, A. Fransson, J. Saras, Rho GTPases have diverse effects on the organization of the actin filament system, *Biochem. J.* 377 (2004) 327–337.
- [6] E.J. Chenette, A. Abo, C.J. Der, Critical and distinct roles of amino- and carboxyl-terminal sequences in regulation of the biological activity of the Chp atypical Rho GTPase, *J. Biol. Chem.* 280 (2005) 13784–13792.
- [7] A.C. Berzat, J.E. Buss, E.J. Chenette, C.A. Weinbaum, A. Shutes, C.J. Der, A. Minden, A.D. Cox, Transforming activity of the Rho family GTPase *Wrch-1*, a Wnt-regulated Cdc42 homolog, is dependent on a novel carboxyl-terminal palmitoylation motif, *J. Biol. Chem.* 280 (2005) 33055–33065.
- [8] Y.Y. Chuang, A. Valster, S.J. Coniglio, J.M. Backer, M. Symons, The atypical Rho family GTPase *Wrch-1* regulates focal adhesion formation and cell migration, *J. Cell Sci.* 120 (2007) 1927–1934.
- [9] D.C. Brady, J.K. Alan, J.P. Madigan, A.S. Fanning, A.D. Cox, The transforming Rho family GTPase *Wrch-1* disrupts epithelial cell tight junctions and epithelial morphogenesis, *Mol. Cell. Biol.* 29 (2009) 1035–1049.
- [10] A. Ruusala, P. Aspenström, The atypical Rho GTPase *Wrch1* collaborates with the nonreceptor tyrosine kinases Pyk2 and Src in regulating cytoskeletal dynamics, *Mol. Cell. Biol.* 28 (2008) 1802–1814.
- [11] N. Lamarche-Vane, A. Hall, CdGAP, a novel proline-rich GTPase-activating protein for Cdc42 and Rac, *J. Biol. Chem.* 273 (1998) 29172–29177.
- [12] N. Richnau, P. Aspenström, Rich, a rho GTPase-activating protein domain-containing protein involved in signaling by Cdc42 and Rac1, *J. Biol. Chem.* 276 (2001) 35060–35070.
- [13] A.J. Self, A. Hall, Measurement of intrinsic nucleotide exchange and GTP hydrolysis rates, *Methods Enzymol.* 256 (1995) 67–76.
- [14] O.T. Fackler, R. Grosse, Cell motility through plasma membrane blebbing, *J. Cell Biol.* 879 (2008) 879–884.
- [15] M. Primeau, A. Ben Djoudi Ouadda, N. Lamarche-Vane, Cdc42 GTPase-activating protein (CdGAP) interacts with the SH3D domain of intersectin through a novel basic-rich motif, *FEBS Lett.* 585 (2011) 847–853.